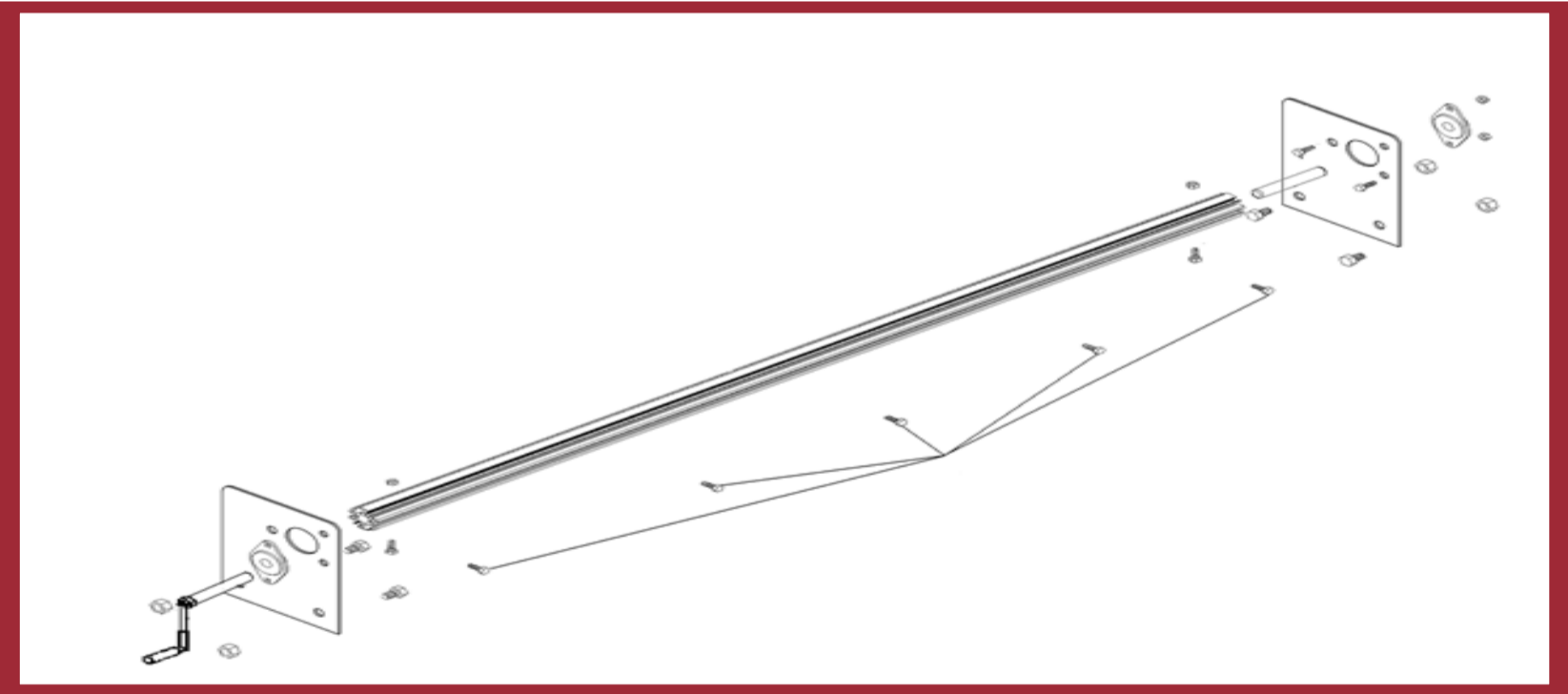




**Installation Guide**



**Installation Guide**  
**Cab Level Crank Style Tarp System**

Exploded Views

Installation Instructions

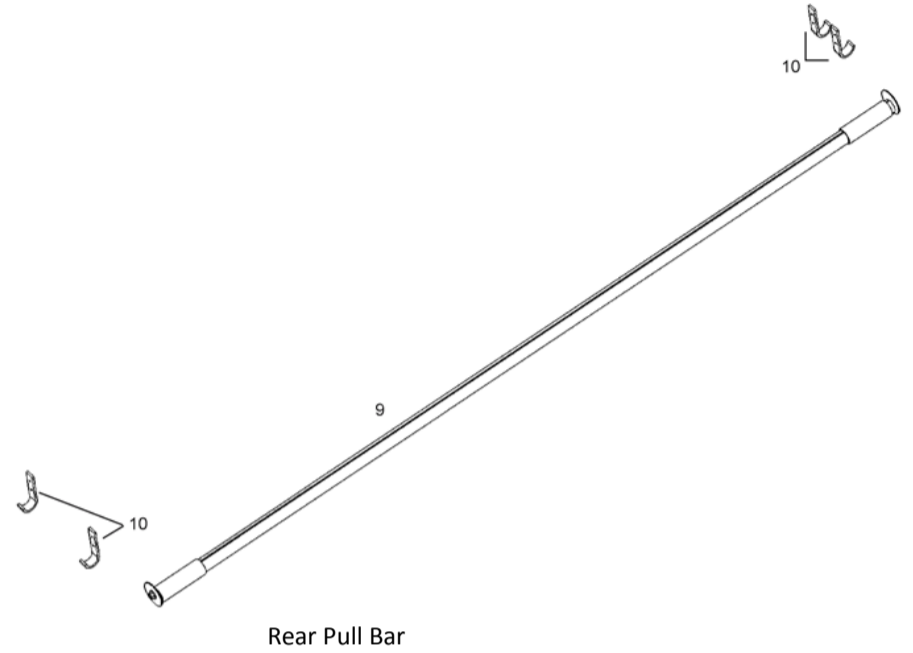
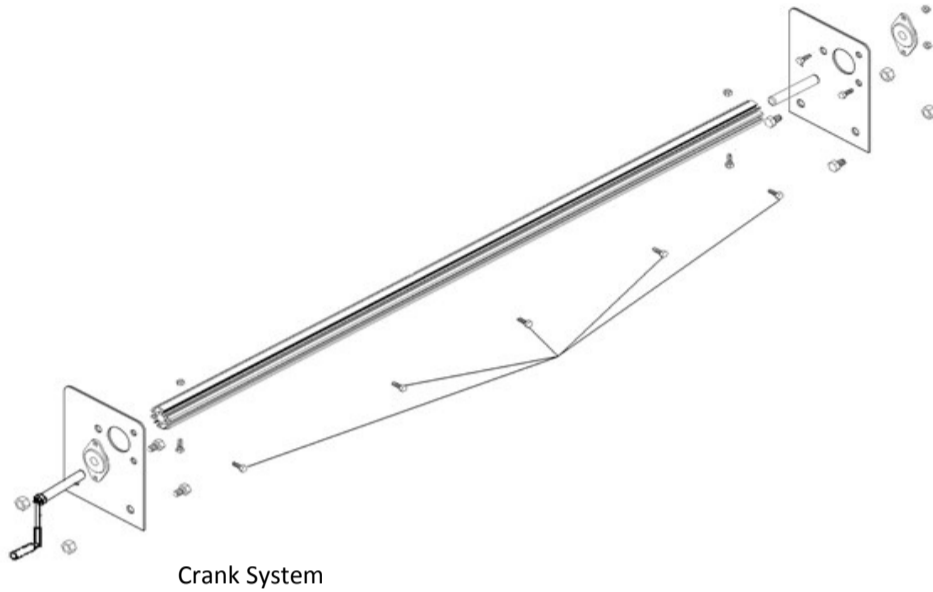
Mounting

System Parts List





## Cab Level Crank Style Tarp System Installation Instructions



- Can be used with tarps up to 40' long.
- Spring loaded break away crank handle
- 1 1/2" diameter Aluminum extruded Tarp Axle
- Steel powder coated mounting brackets and sealed bearings

### MOUNTING THE TARP SPOOL MOUNTING BRACKETS

- 1) Mount the two supplied TARP SPOOL MOUNTING BRACKETS on the exterior, and as far forward as possible, of the dump box. Drill the two mounting bracket holes 1-3/4" down from the top edge of the box.
- 2) Use the supplied 1/2" x 1" bolts & 1/2" nuts for attaching the Tarp Spool Mounting Bracket.
- 3) Install the AXLE BEARING WITH FLANGE to the outside of the TARP SPOOL MOUNTING BRACKET on both the driver's side and the passenger side of the truck. Use the supplied 5/16" x 7/8" bolts & 5/16" nuts for mounting.

### Installing the Tarp Axle

- 1) Measure the distance between the two TARP SPOOL MOUNTING BRACKETS. Verify that the TARP AXLE is 1-inch shorter than this length. If the Tarp Axle is too long, cut it to the correct length then redrill a 5/16" hole 1/2" from the end.
- 2) Slide the two PLASTIC TARP AXLE CAPS into both ends of the TARP AXLE.
- 3) Slide the TARP AXLE into the ROTATABLE HANDLE SHAFT and secure with a 5/16" x 2-1/4" bolt & 5/16" nut.
- 4) Slide the SPOOL SHAFT into the other end of the Tarp Axle and secure with a 5/16" x 2-1/4" bolt & 5/16" nut.

### Rear Pull Bar Installation

- 1) Slide splined side of tarp into extrusion on the pull bar
- 2) Slide PVC tube sections over each open side of pull bar.
- 3) Attach fender washer and bolt into extruded portion of pull bar.

### System Includes

QTY.	Part Number #	Description
1	13967	Tarp Axle, Hollow 103", 1-1/2"
2	13943	1 1/2" Plastic Tarp Axle Cap
2	11366	Steel Tarp Spool Mounting Brackets
2	11139	Axle bearing with flange
1	11201	Spool Shaft 5" length
1	11265	Rotatable Handle on Shaft

### Hardware Kit Includes

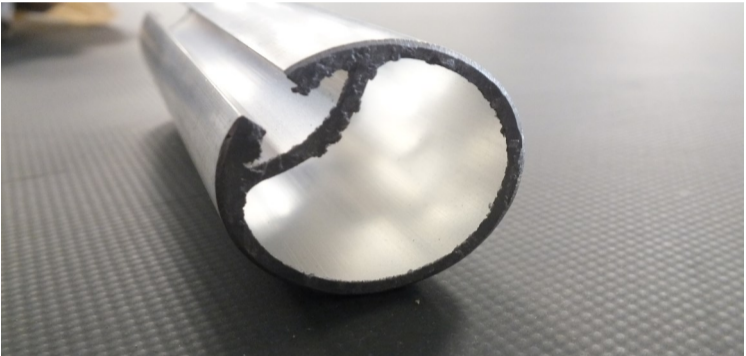
QTY.	Part Number #	Description
4	11270	1/2"-13 x 1" Grade 5 Bolt
4	11271	1/2" - 13 Grade 8 Nylock Nut
4	11207	5/16" - 18 x 2-1/4" Bolt
1	11202	5/16" - 18 x 2-1/4" Bolt
6	1129	5/16" Grade 8 Nylock Nut
5	14026	1/4" x 1" Zinc Plated Fender Washer
5	11362	1/4" Nylock Nut
5	13922	1/4"-20 x 3/4" Zinc Plated Carriage Bolt

### Tools Required

3/8" Drive Ratchet	1/4" Socket & Wrench
Electric Drill	5/16" Socket & Wrench
Radial Arm Saw	1/2" Socket & Wrench
Rubber Mallet	
Tape Measure	



## Cab Level Crank Style Tarp System Installation Instructions



### Attaching the Tarpaulin

Bring the free end of the TARP to the front of the truck. to attach the Tarp to the **TARP AXLE (#7)**:

- 1) Tarps with Grommets on the front edge can also be mounted by sliding the 1/4-20 x 3/4" Zinc Plated Carriage Bolt in the correct slot and then screw together using 1/4" x 1" Zinc Plated Fender Washer 1/4" Nylock Nut (#15)

(Optional Heavy duty Tarp Axle see Top Left Picture;  
Hollow 103" Tarp Axle see Bottom Left Picture)

### If you need Further Assistance....

Our Friendly Customer Service Representatives will gladly assist you with any problems or issues you may encounter.

Sold and Serviced

Granite State Cover

Toll Free: 800-727-7004

[www.granitestatecover.com](http://www.granitestatecover.com)

[info@granitestatecover.com](mailto:info@granitestatecover.com)

