



PROFESSIONAL GRADE
TARP SYSTEMS

521

ELECTRICAL TWIN
GEARBOX SYSTEM

P/N: **521GPM01EN-R2**
Updated: March 2022

521 MECHANISM PARTS LIST



E-Cargo Tarps Inc.
Head Office
6015, Raoul-Lassonde
Saint-Hyacinthe, Quebec,
Canada
J2R 1E4

Tel.: (450) 253-3560
Toll free: (877) 353-3560
Fax: (450) 253-3561
Email: info@E-CargoTarps.com



TABLE OF CONTENTS

521 COMPLETE MECHANISM	56
ELECTRIC BRACKET COMPONENTS	57
ELECTRIC CONTROL COMPONENTS.....	58
MECHANISM & HANDLE ADAPTOR.....	59
VERTICAL SHAFT	60
CENTRAL MECHANISM	61



NOTICE



ELECTRIC SYSTEM



- This electric system must be used with **4-gauge wire (AWG)**.
- The battery box on the truck must have **60-Amp or more** breaker to fit with this electric system.
- Breaker is in place for added protection but the operator should always have a visual on the motor and limit power at the end of travel.
- Holding the button once the tarp is completely open or close will trip the circuit breaker and eventually damage the motor due to over-ampage.
- If the breaker is tripped, it will auto-reset within 60 seconds. During this period, the motor will not work.

WARNING

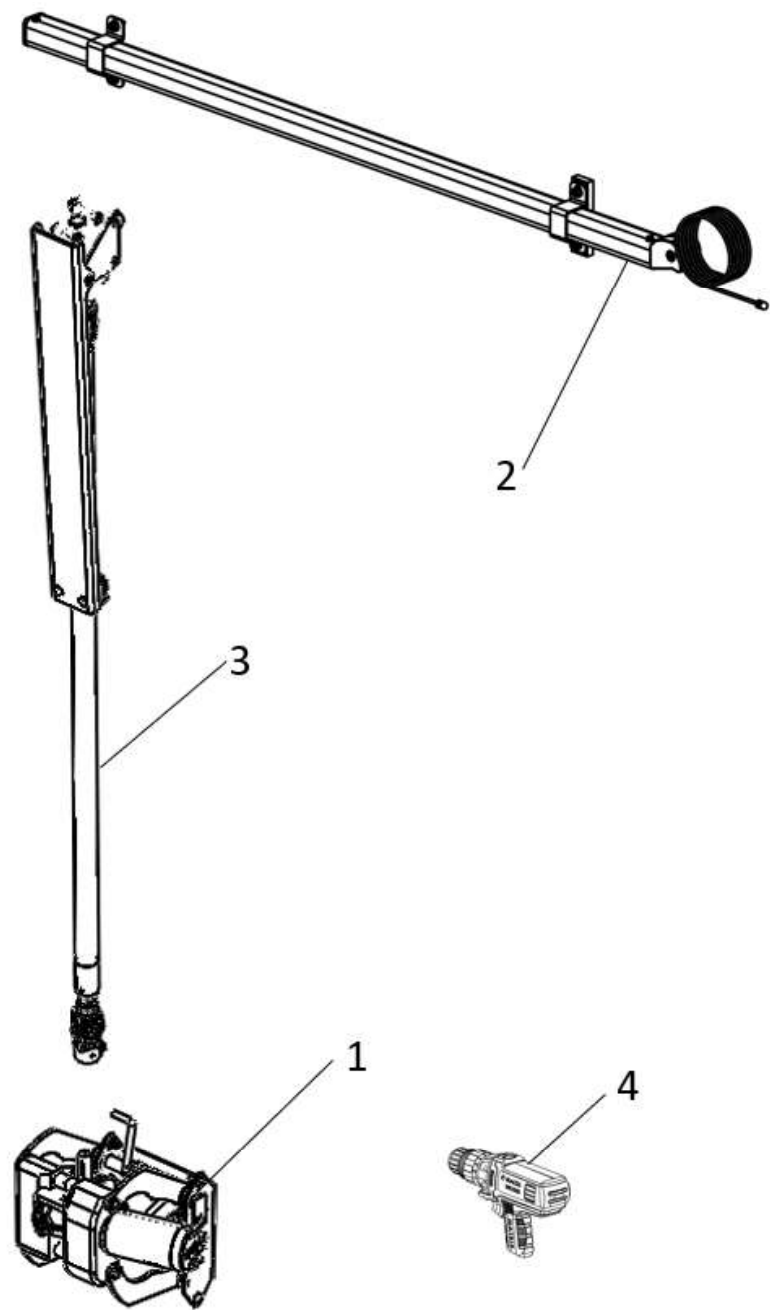
GENERAL SAFETY INFORMATION

- **Stay clear** of moving components during system operation.
- **Always** keep visual contact with the tarp rolling pipe while operating.
- **Never** operate the system while the trailer is in movement.
- When the tarp is closed, **ensure** that roll pipes are properly locked into roll securement blocks.
- **Never** operate the system in the presence of high winds.
- **Never** climb on the mechanism components.
- **Never** use an impact driver/drill to operate the tarp. Otherwise it will damage the gearbox.
- **Do not** operate the system under low height power lines.
- **Always** make sure the set screws between mechanism and the roll-pipe are well tightened to prevent the shaft from separating.

Failure to comply with this WARNING could cause damage and/or injuries.

101CA9004-EN

521 COMPLETE MECHANISM

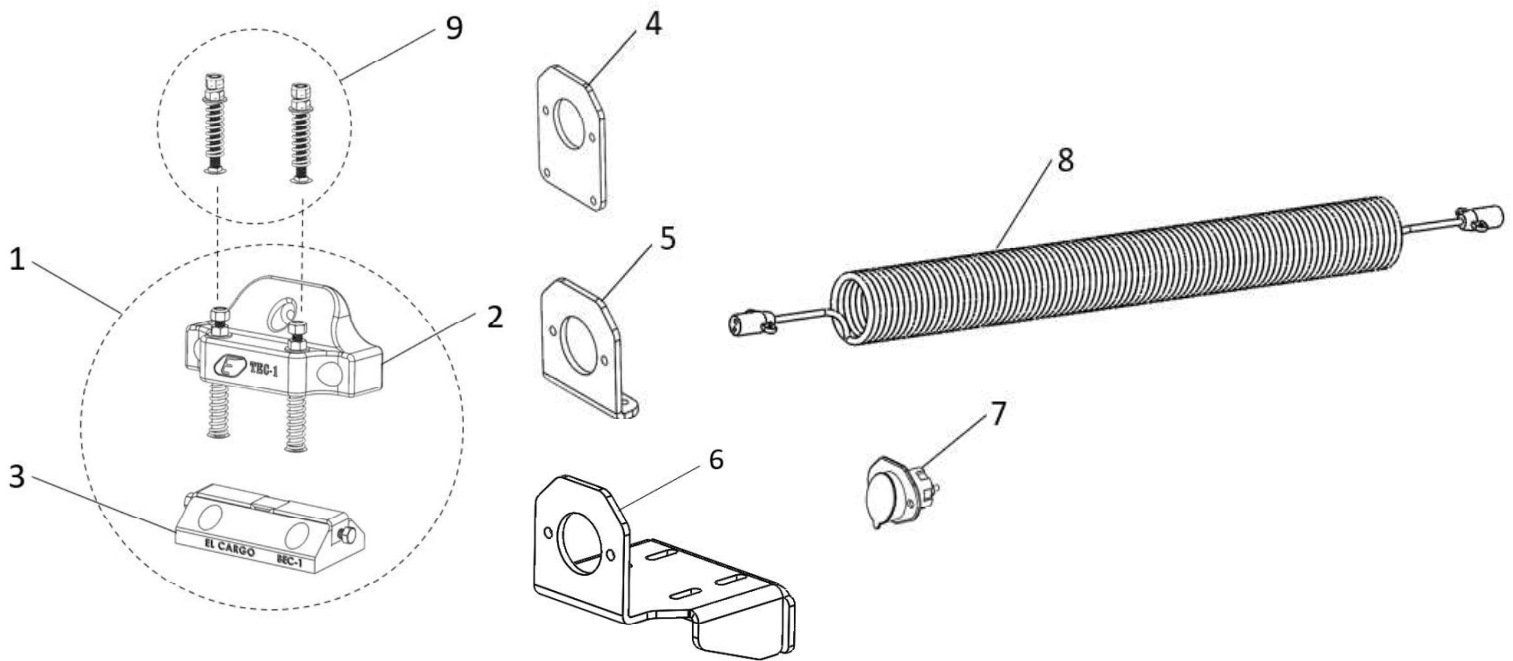


521A0001 521 ELECTRICAL ASSEMBLY WITH 60" EXTERNAL TENSIONNER

Item	# Part	Description
1	521A0004	CENTRAL MECHANISM WITH ELECTRIC MOTOR
2	101A1008	60" EXTERNAL TENSIONER SINGLE HEAD WITH FIXATION
3	441A0004	COMPLETE VERTICAL SHAFT ASSEMBLY
4	101CA1200	AIR DRILL FOR TARP MOTOR

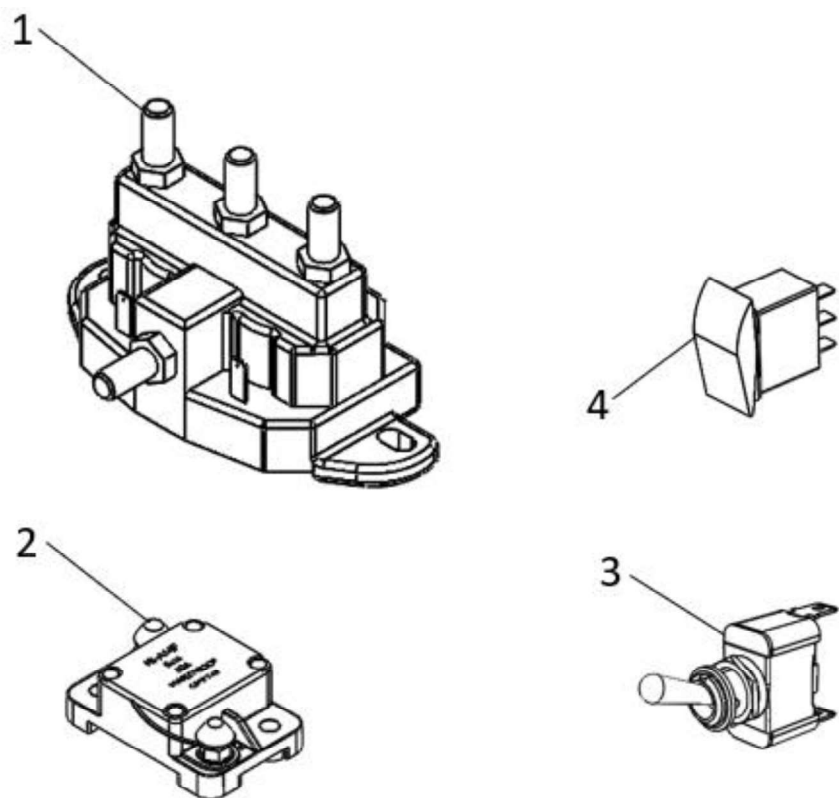


ELECTRIC BRACKET COMPONENTS



Item	# Part	Description
1	101A1045	CONTACT SWITCH KIT
2	101A1052	UPPER CONTACT SWITCH ASSEMBLY
3	101A1051	BOTTOM CONTACT SWITCH ASSEMBLY
4	101CM1059	ELECTRIC PLUG BRACKET
5	101CM1060	ELECTRIC PLUG BRACKET 90 DEGREE
6	101SA1030	ELECTRIC PLUG BRACKET LONG 90 DEGREE
7	151CA1113T	DOUBLE FEMALE CONNECTOR 670-22 TECTRAN
8	151CA1115T	DOUBLE CONNECTOR CABLE
9	101A1032	CONTACT SWITCH PIN KIT(2)

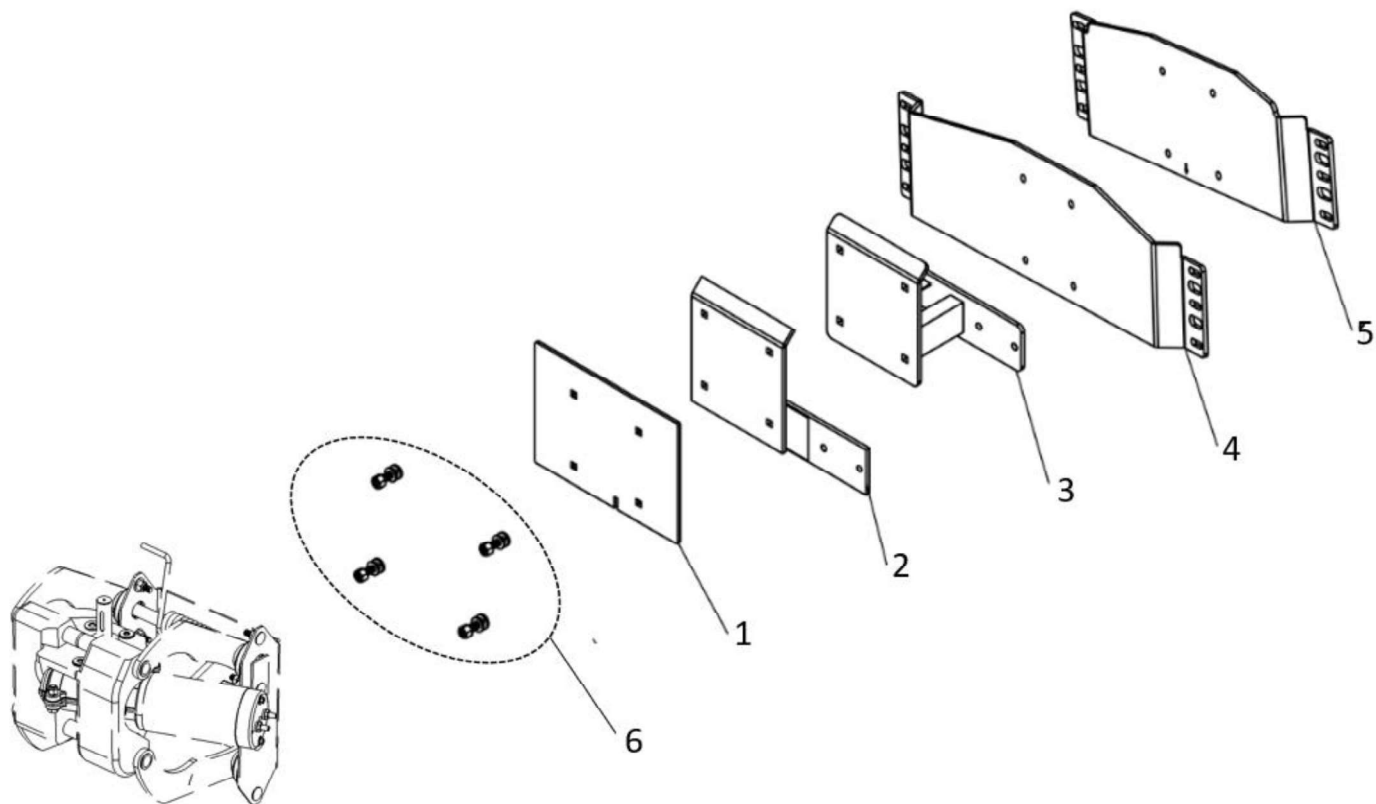
ELECTRIC CONTROL COMPONENTS



Item	# Part	Description
1	151CA1148	WINCH REVERSIBLE 12V SOLENOID
2	151CA2133	BREAKER 60A HEAVY DUTY
3	151CA1131	TOGGLE SWITCH ON-OFF SPRING RETURN COATED
4	151CA1158	TOGGLE SWITCH



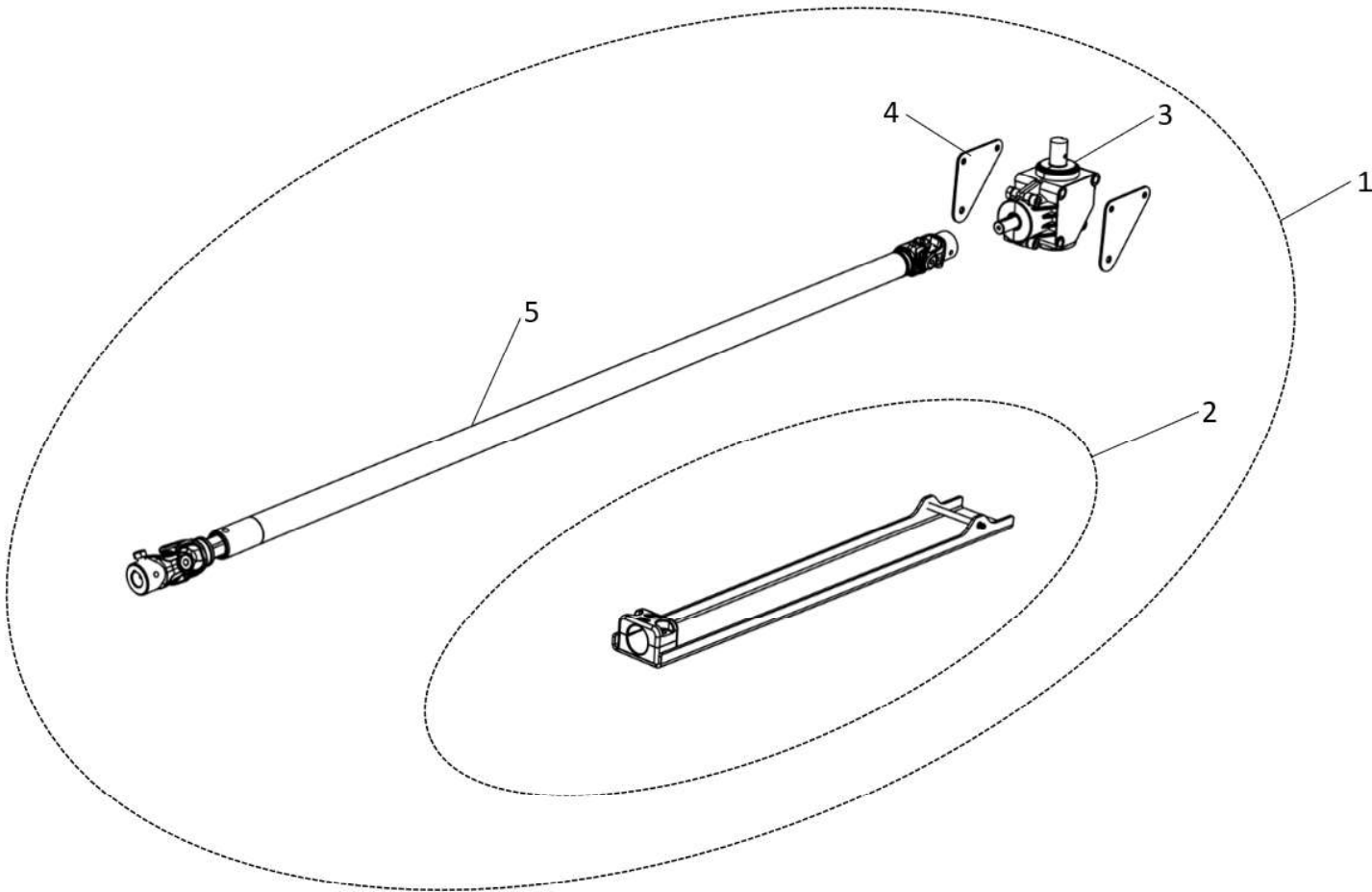
MECHANISM & HANDLE ADAPTOR



Item	# Part	Description
1	421CM0010	TRAILER MOUNTING PLATE
2	421SA2001	421 MECHANISM EXTENSION 45 DEGREE
3	421SA2002	421 MECHANISM EXTENSION 90 DEGREE
4	421CM4001	CENTER MECHANISM PLATE (WILSON)
5	421CM2009	CENTER MECHANISM PLATE (LODE KING DISTINCTION)
6	710R0141	MECHANISIN ASSEMBLY HARDWARE



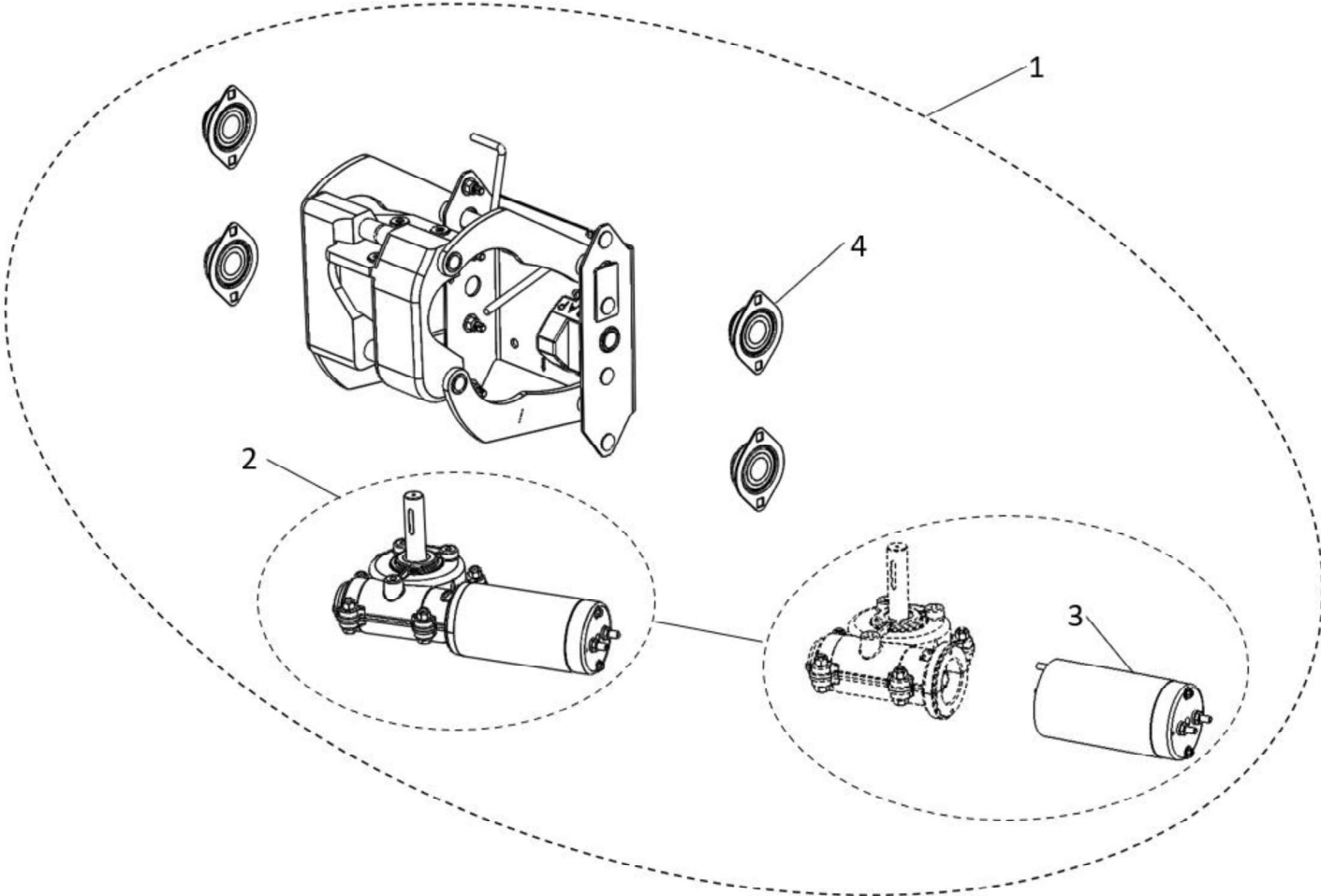
VERTICAL SHAFT



Item	# Part	Description	Qty
1	441A0004	COMPLETE VERTICAL SHAFT ASSEMBLY	1
2	441A0007	PROTECTOR PLATE WITH BUSHING	1
3	151CA1011	L150A 1,9:1 (3/4" X 1") GEAR BOX	1
4	101CM5003	SUPPORT PLATE	2
5	151CA2701	VERTICAL PTO - 3/4" KW 3/16" - 3/4" KW 3/16"	1



CENTRAL MECHANISM



Item	# Part	Description	Qty
1	521A0004	CENTRAL ELECTRICAL MECHANISM ASSEMBLY	1
2	541CA1001	90:1 POWER DRIVE WITH 12V "C" MOTOR	1
3	151CA1038	REPLACEMENT MOTOR 12V "C"	1
4	151CA2190	1" FLANGE BEARING	4

