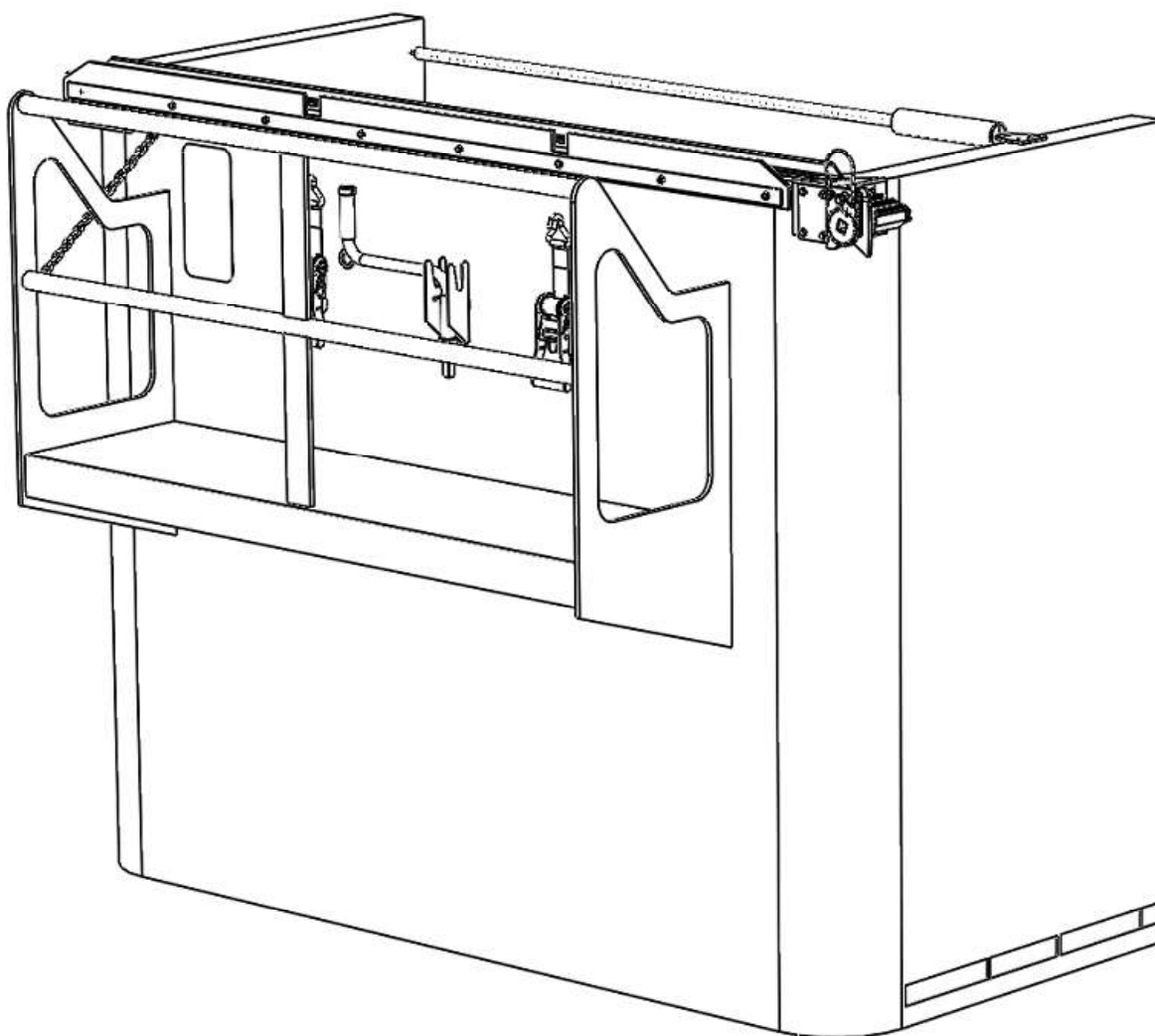


## 201 MECHANISM PARTS LIST



## TABLE OF CONTENTS

201 LOCKING MECHANISM.....	23
DRIVER SIDE .....	23
PASSENGER SIDE .....	24
FRONT PARTS.....	25
TOP PARTS.....	26



**E-CARGO TARPS®**  
MADE IN CANADA

E-Cargo Tarps Inc.  
Tel. : (450) 253-3560  
Toll free: (877) 353-3560  
Email : [info@E-CargoTarps.com](mailto:info@E-CargoTarps.com)  
Web site: [e-cargotarps.com](http://e-cargotarps.com)

CANADIAN PATENT # : 2808833, 2350179, 2428891, 2580899, 2657853, 2721461, 2853979  
AMERICAN PATENT # : 8641123, 6595594, 6805395, 7506912, 7513561, 8177284, 9150086, 9561747

**! WARNING**

### 201 TARP SYSTEM OPERATION



Loop → Swoop → Lock

- **OPEN TARP POSITION** → Ensure that handle is always retained by the safety chain. Chain is always passed through the handle specific D-Ring.
- **PROPERLY** secure the roll pipe in the anchoring blocks before using the trailer on the road.
- **ALWAYS** make sure the latch is well engaged to block the rotation of the roll pipe while securing the system.
- **NEVER** operate the system in high winds.

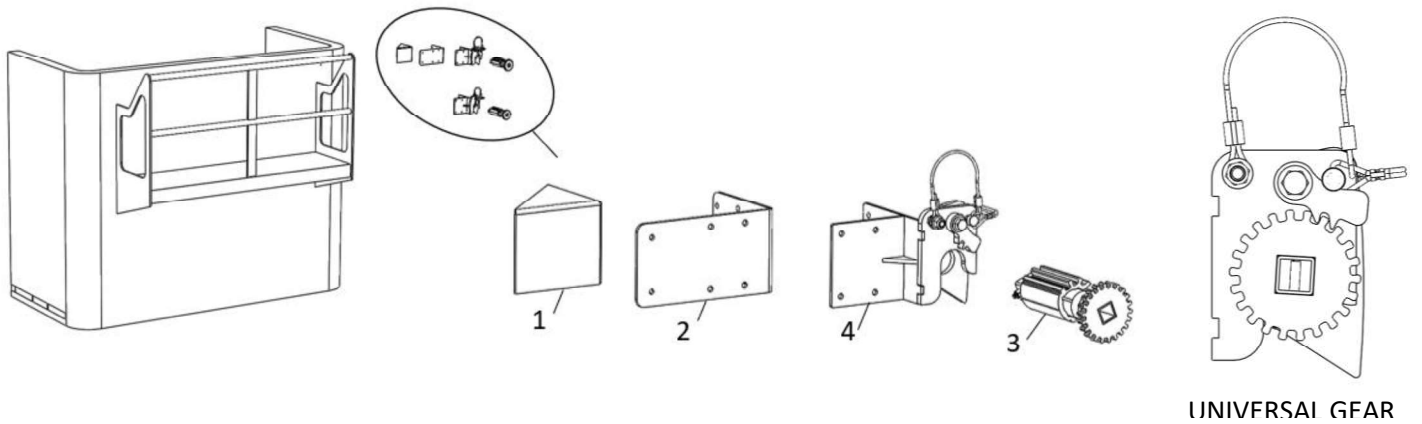
Failure to comply with these warnings may result in damage and/or serious injuries.

Label #: 101CA9013-EN



## 201 LOCKING MECHANISM

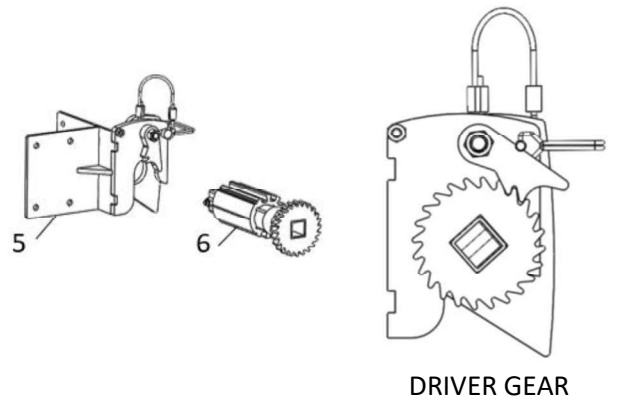
### DRIVER SIDE



#### OLD GENERATION (GEN 1)

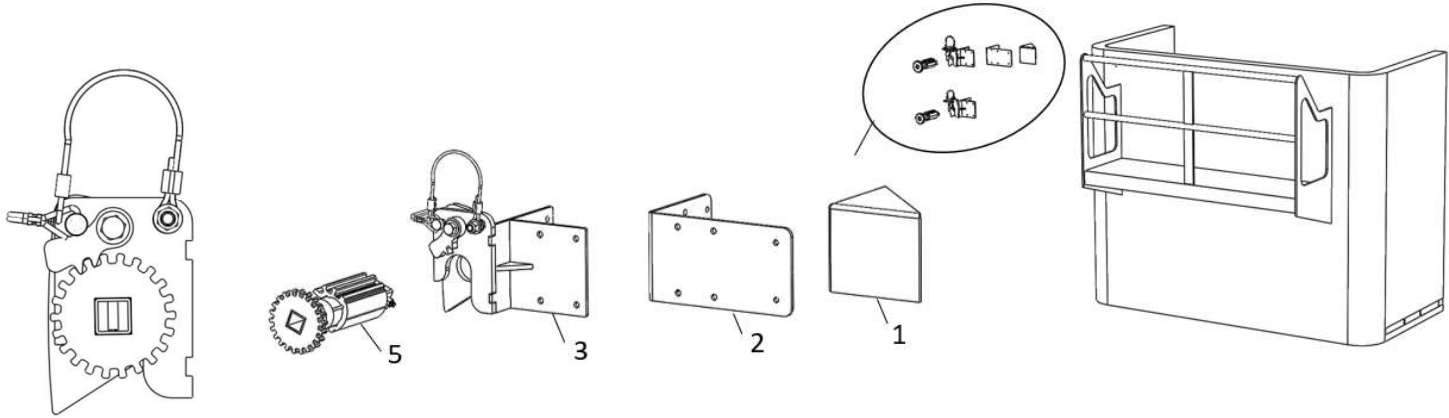
Sold from 2002 to July 2021

Available for replacement parts



Item #	Part	Description
1	101SA1021-6	CORRECTOR CORNER 6 X 6 FOR CAP INSTALLATION
2	201CM5008	CORNER FOR MECHANISM ( R3 )
3	201A1020-U	DIRECT DRIVE ASSEMBLY UNIVERSAL
4	201A1022-C	201 LOCKING MECHANISM GEN2 -DRIVER (TARP FIXED PASSENGER)
5	201SA1003-R	DRIVER LOCKING MECHANISM (GEN 1)
6	201A1020-C	DIRECT DRIVE ASSEMBLY DRIVER

PASSENGER SIDE



UNIVERSAL GEAR

**OLD GENERATION (GEN 1)**

Sold from 2002 to July 2021

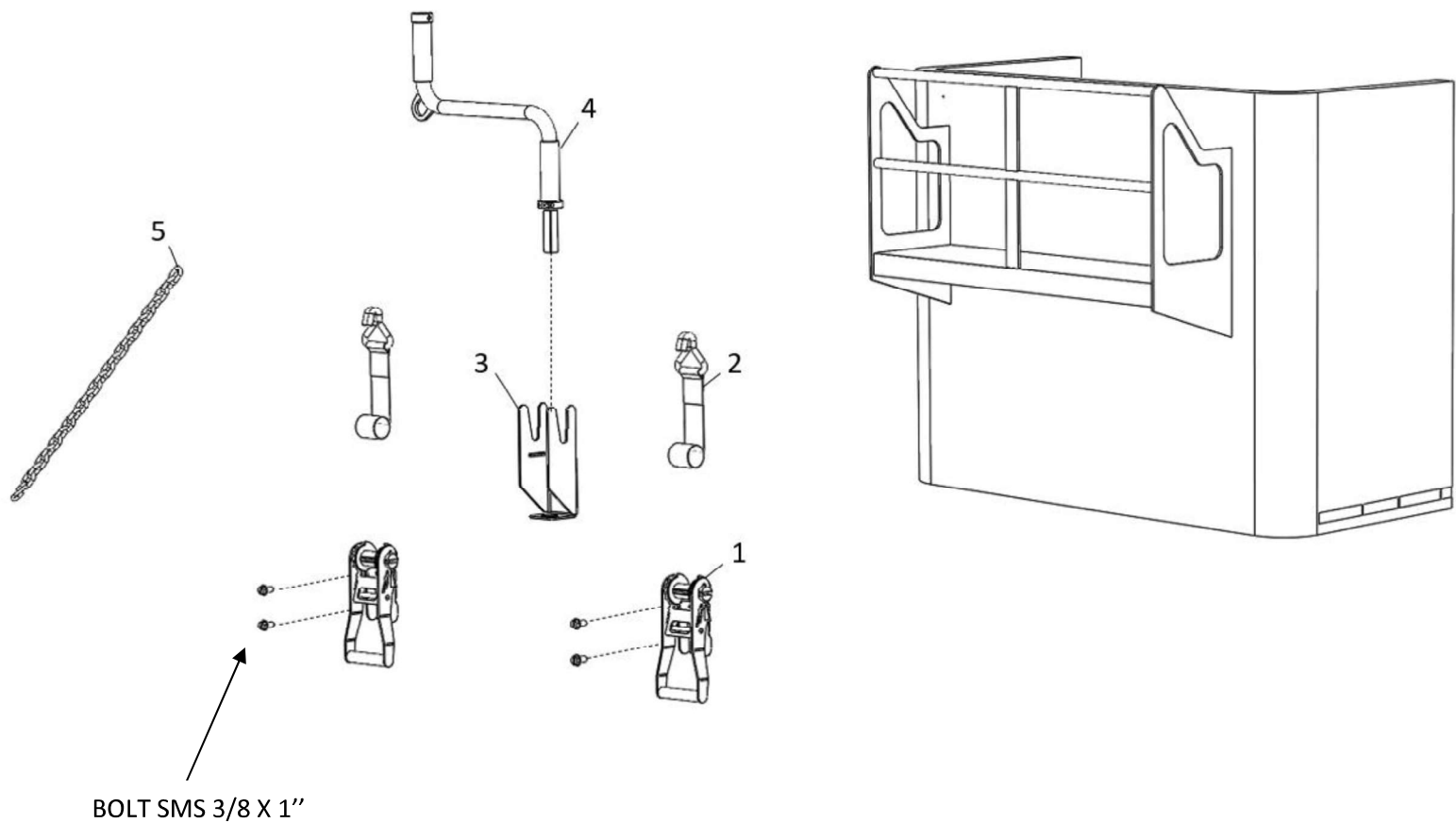
Available for replacement parts

PASSENGER GEAR

Item	# Part	Description
1	101SA1021-6	CORRECTOR CORNER 6 X 6 FOR CAP INSTALLATION
2	201CM5008	CORNER FOR MECHANISM ( R3 )
3	201A1022-P	201 LOCKING MECHANISM GEN2 -PASSENGER (TARP FIXED DRIVER)
4	201SA1001-R	PASSENGER LOCKING MECHANISM (GEN 1)
5	201A1020-U	DIRECT DRIVE ASSEMBLY UNIVERSAL
6	201A1020-P	DIRECT DRIVE ASSEMBLY PASSENGER



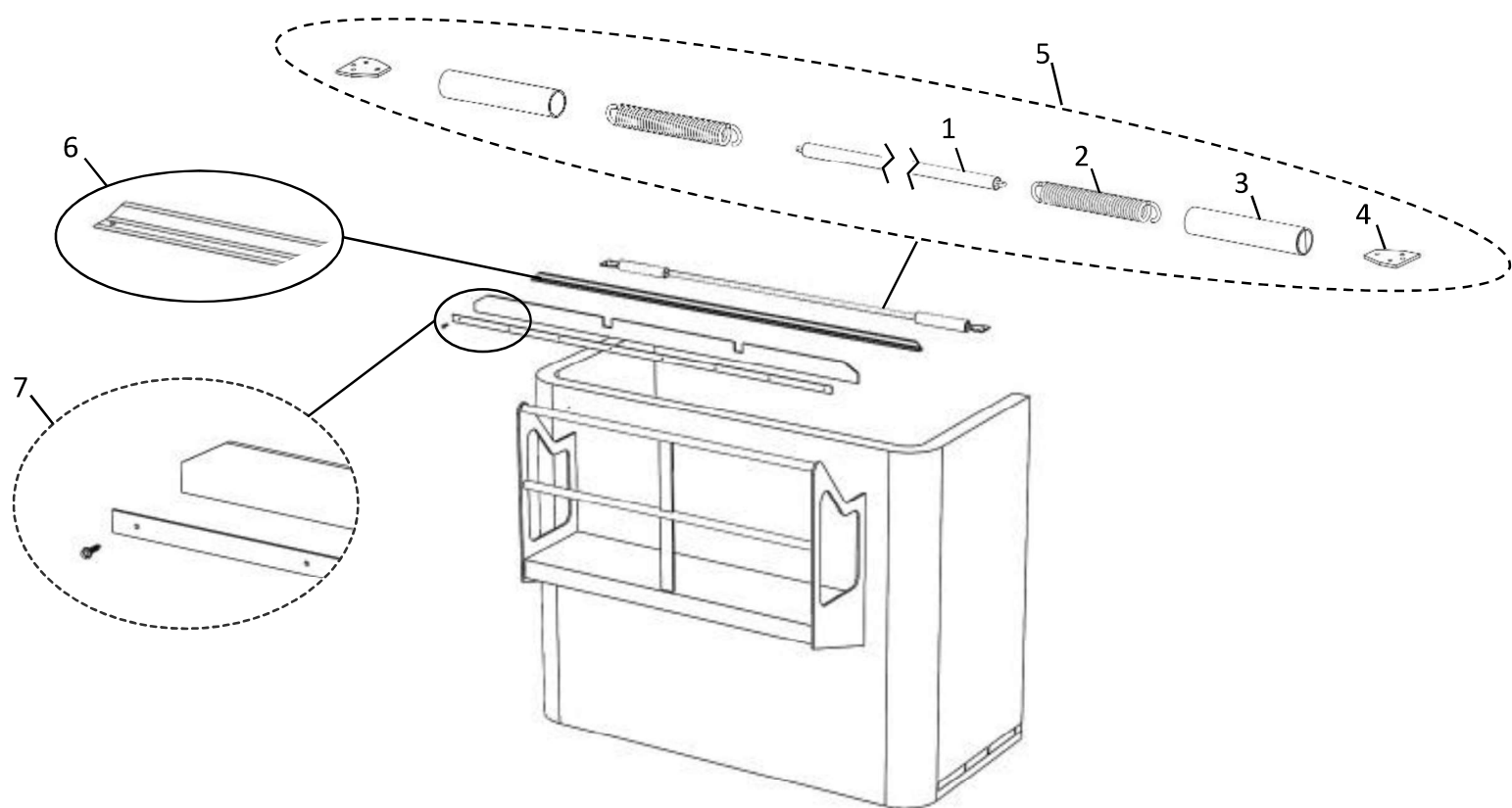
FRONT PARTS



Item	# Part	Description
1	101SA1065	RATCHET WITH INKING PLATE
2	201A1019	STRAP WITH HOOK FOR 22" RATCHET
3	201CM5013	201 HANDLE SUPPORT
4	201A1021	CRANK HANDLE FOR DIRECT DRIVE OPERATION GEN2
5	201A1010	201 SAFETY CHAIN WITH CARABINER



TOP PARTS



Item	# Part	Description
1	201CA1001	60" CHAIN WITH PROTECTOR
2	201CA0001	SPRING (ONLY) FOR CHAIN KIT
3	201SA1011	SPRING PROCTECTOR
4	201CM1018	CHAINS ATTACHMENT
5	201A1006	CHAIN SUPPORT
6	101CM1300	ANGLE 96" WIND DEFLECTOR
7	201A1013	RUBBER WIND DEFLECTOR

